



Our smart
information
tool for the
digital OR

Precise display of **TIME** and **DATE** by automatic synchronisation.

TEMPERATURE, HUMIDITY, and AMBIENT INDICATOR are transferred without loss.

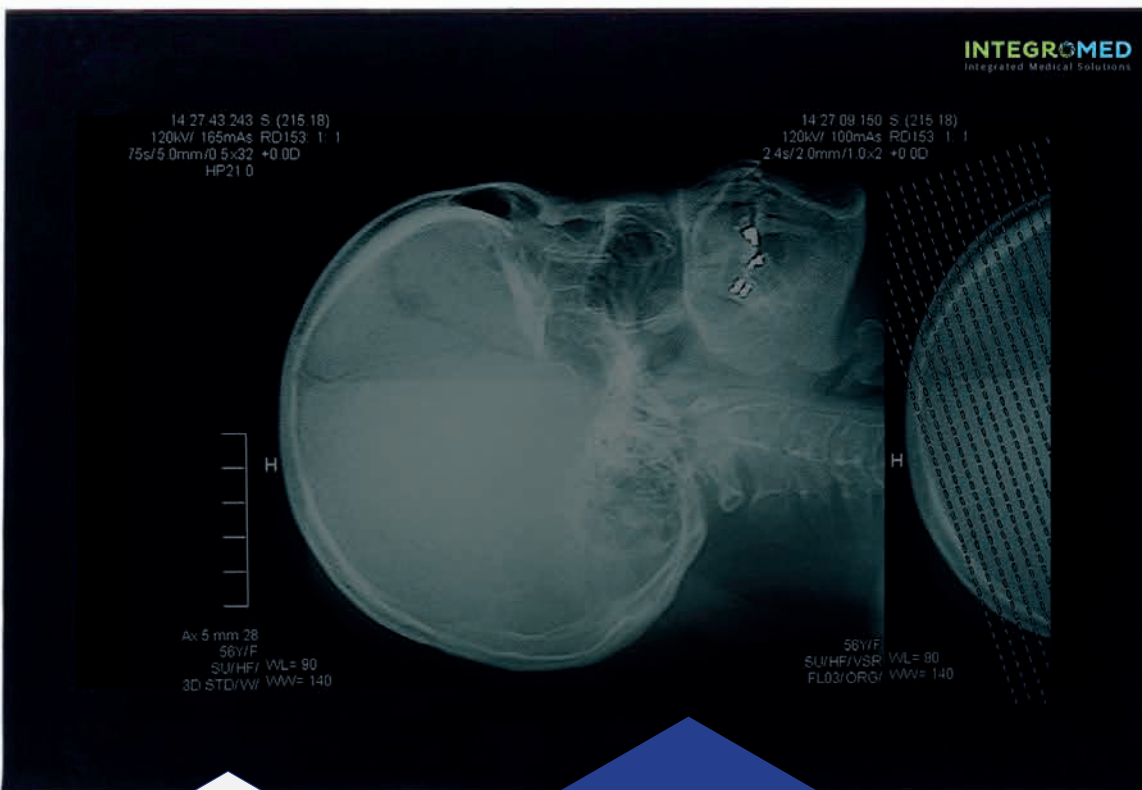
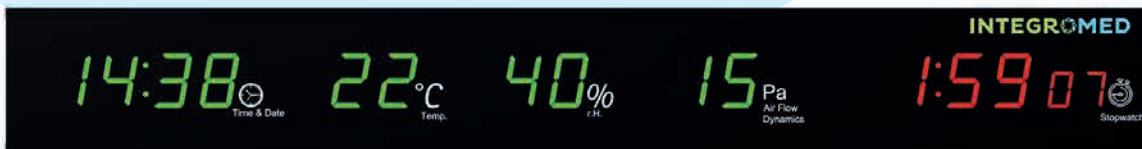
The integrated **STOPWATCH** allows precise time measurement.

M 1

M 2-4

M 5

M = Module



Thanks to its frameless integration into the Integromed wall panel system, the product offers optimal hygienic conditions and an appealing design.

The time setting of the **SID** can be synchronised with existing **SID** devices.

ALL ADVANTAGES AT A GLANCE

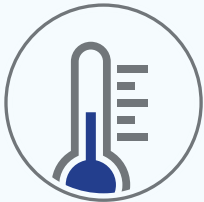
PRECISE TIME MEASUREMENT TO THE SECOND



In the operating room, time plays an important role. The device updates the time and date since it can be synchronised in several ways. The display change between time and date automatically takes place every 10 seconds.



PRECISE TEMPERATURE AND HUMIDITY MEASUREMENT



The external sensor module measures humidity and temperature.

It is connected to the product with a standard 1.8 m cable. If necessary, the sensor module can be connected with an extension cable up to 10 m in length.



The data from the sensors is transmitted accurately as digital signals to the product.

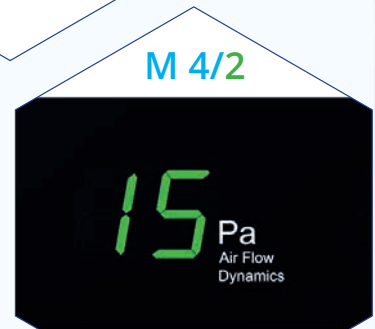


HIGHLY SENSITIVE AMBIENT INDICATOR DISPLAY

Internally there is a precise differential pressure sensor, which is connected to the outside via a tube.

The measured pressure indicates the flow direction of the air in the operating room. This assists in reducing the contamination between operating rooms.

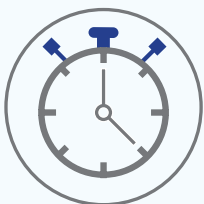
In case of negative pressure (<1 Pa), the red alarm LED flashes along with an acoustic alarm.



EASY OPERATION OF THE STOPWATCH

The stopwatch allows the user to measure the time for preparations, operations and follow-up processes in the OR accurately.

Time management helps with planning and optimising workflow during surgeries.



SID 1000/900

Precise display of **TIME** and **DATE** by automatic synchronisation.

TEMPERATURE, HUMIDITY, and AMBIENT INDICATOR are transferred without loss.

The integrated **STOPWATCH** allows precise time measurement.

M = Module

M 1

M 2


M 3



NEW
Anti-reflective
glass!

The **STOPWATCH** is operated via two independent buttons and can be controlled by the operating system.

The **SURGEON INFORMATION Display (SID)** is available in three sizes: 1200/1000/900 cm.


All data are reliably transferred to the „IntuitiveConsole“ and stored for 24 hours.

INTEGROMED

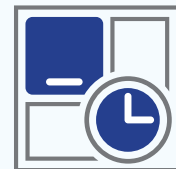
INTEGROMED is your first point of contact when it comes to high-quality integrated solutions for the construction and furnishing of medical facilities. We capitalise on versatile, functional and, at the same time, attractive systems and create a unique environment for medical personnel and patients. We do not only deliver individual products, but also complete, tailor-made solutions.

INTEGROMED stands for competence, cooperation, responsibility and innovation.

The new „Surgeon Information Display“ provides you with a quick overview of all important data of the indoor climate. Sensors measure environmental information such as room temperature and humidity, and also provide information about the room pressure in the operating room: Through specially developed sensors, you can check the pressure difference to the outside and thus detect contamination risks.

The integrated GPS time synchronization and stopwatch help you organize and document your work flow effectively. The SID can store data up to 24h and transfer them to the „IntuitiveConsole“ or the hospital information system.

The SID can be installed as a flush-mounted alternative over a monitor or on surgery room walls, e.g. above a door.



Innovative Ideas
For Complex
Healthcare Facilities.



TECHNICAL DATA

10/2017

SURGEON INFORMATION DISPLAY | SID 1200 / 1000 / 900

Application	Monitoring of clean-room conditions in operating rooms
Glass	Laminated safety glass (LSG), anti-reflective, 6 mm
Temperature/humidity sensor	External module with up to 10 m cable (1.8 m standard)
Pressure sensor, differential pressure sensor	Display range 0 ... 99 Pa, 10 m tube (standard)
Inputs/Outputs	Inputs for external sensor, GPS module, external buttons, alarm output
Time Synchronisation	Master-slave connection possible
Power supply	12 VDC, 5 A, 80-264 VAC 50/60 Hz
Alarm function	5 V/12 V, 500mA signal output, display flashes if pressure is too low
SID 1200 dimensions (W x H x D)	1190 mm x 150 mm x 118 mm plus mounting bracket
Weight	15.0 kg
SID 1000 dimensions (W x H x D)	990 mm x 150 mm x 118 mm plus mounting bracket
Weight	12.0 kg
SID 900 dimensions (W x H x D)	890 mm x 150 mm x 118 mm plus mounting bracket
Weight	11.0 kg
Conformity	RoHS compliant (led-free), CE standards, medical device according to EN 60601-1-2, 2014/30/EU EMC Directive, 2014/35/EU Low Voltage Directive, 93/42/EEC Medical Device Directive, approved by: CE-Lab GmbH: accreditation no. DAKKS D-PI-12133-01

The **SID**
is available in
THREE SIZES.

The SID has been
tested in accordance
with the German Act
on Medical Devices
(MPG).



For references,
scan QR code.

INTEGROMED
Integrated Medical Solutions

INTEGROMED GmbH
Zimmerstr. 1 • 04109 Leipzig/Germany
www.integromed.de

