



Our smart
information
tool for the
digital OR

Precise display of **TIME** and **DATE** by automatic synchronisation

TEMPERATURE, HUMIDITY, and DIFFERENTIAL PRESSURE INDICATOR are transferred without loss

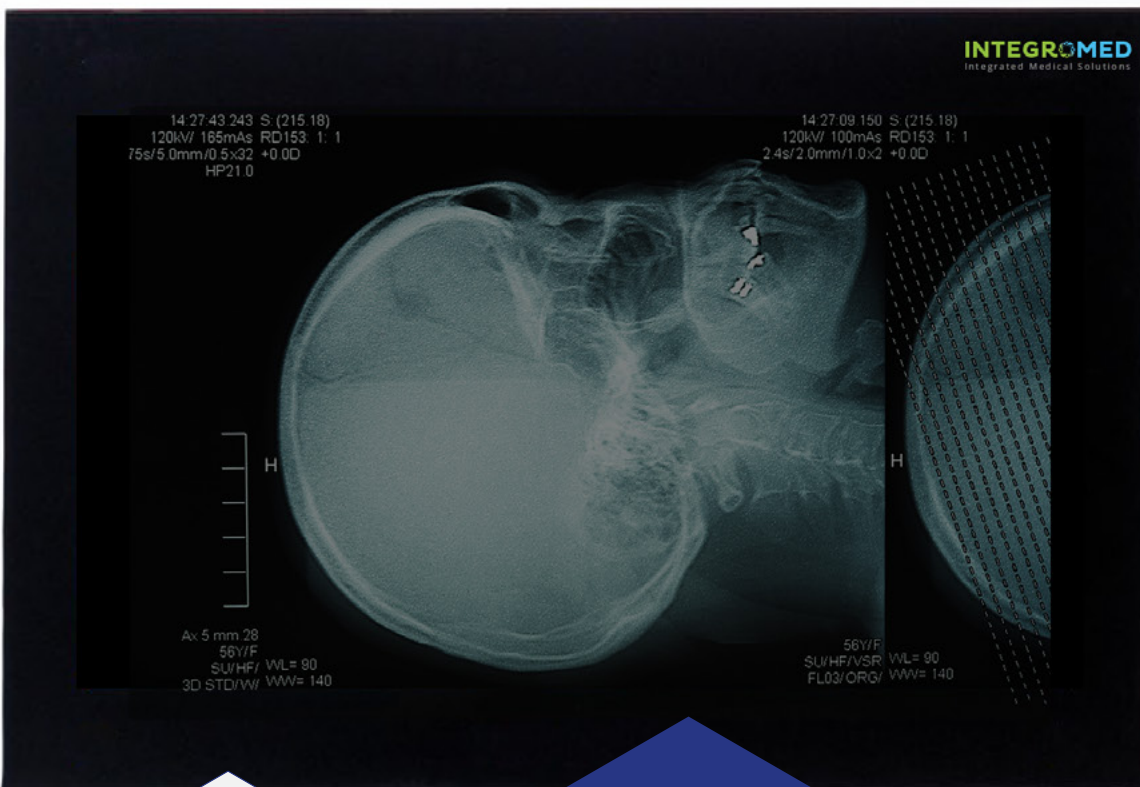
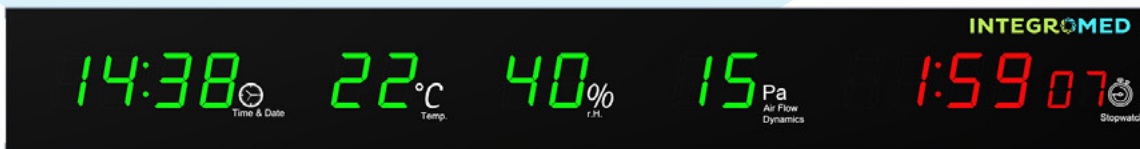
The integrated **STOPWATCH** allows precise time measurement

M 1

M 2-4

M 5

M = Module



Thanks to its frameless integration into the INTEGROMED wall panel system, the product offers optimal hygienic conditions and an appealing design

The time setting of the **SID** can be synchronised with existing **SID** devices

ALL ADVANTAGES AT A GLANCE

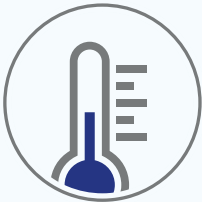
PRECISE TIME MEASUREMENT TO THE SECOND



In the operating room, time plays an important role. The device updates the time and date since it can be synchronised in several ways. The display change between time and date automatically takes place every 10 seconds.



PRECISE TEMPERATURE AND HUMIDITY MEASUREMENT



The external sensor module measures humidity and temperature.

It is connected to the product with a standard 1.8 m cable. If necessary, the sensor module can be connected with a Cat. 6 Twisted Pair Cable up to 20 m length.



The data from the sensors is transmitted accurately as digital signals to the product.



HIGHLY SENSITIVE DIFFERENTIAL PRESSURE INDICATOR

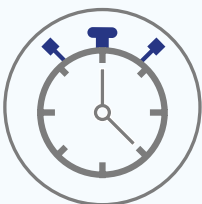


Internally there is a precise differential pressure sensor, which is connected to the outside via a tube.

The measured pressure indicates the flow direction of the air in the operating room. This assists in reducing the contamination between operating rooms.



EASY OPERATION OF THE STOPWATCH



The stopwatch allows the user to measure the time for preparations, operations and follow-up processes in the OR accurately. Time management helps with planning and optimising workflow during surgeries.



SID 900

Precise display of **TIME** and **DATE** by automatic synchronisation

TEMPERATURE, HUMIDITY, and AMBIENT INDICATOR are transferred without loss

The integrated **STOPWATCH** allows precise time measurement

M = Module

M 1

M 2

M 3



The **STOPWATCH** is operated via two independent buttons and can be controlled by the operating system

Anti-reflective safety glass

All data are reliably transferred to the **INTUITIVE Console** and stored for 24 hours

WHY CHOOSE INTEGROMED?

INTEGROMED makes healthcare facilities ready for the future. With creativity, know-how, and determination, we are questioning the status-quo, constantly striving for maximum user convenience and benefit. In this spirit, we provide healthcare facilities with complete, tailor-made solutions, creating a unique environment for medical staff and patients.

We capitalize on versatile, functional and at the same time attractive systems. Not only do we deliver individual products, but also complete, tailor-made solutions.

The **SURGEON INFORMATION Display** provides you with a quick overview of all important data of the indoor climate. Sensors measure environmental information such as room temperature and humidity, and also provide information about the room pressure in the operating room: Through specially developed sensors, you can check the pressure difference to the outside and thus detect contamination risks.

The integrated GPS time synchronization and stopwatch help you organize and document your work flow effectively. The **SID** can store data for several days and transfer them to the **INTUITIVE Console** or the hospital information system.

The **SID** can be installed as a flush-mounted alternative over a monitor or on surgery room walls, e.g. above a door

we
believe
in **we**



TECHNICAL DATA

01/2024

SURGEON INFORMATION Display I SID 1200 / 900

Application	Monitoring of clean-room conditions in operating rooms
Glass	3 mm hardened glass, non-reflecting
Temperature/humidity sensor	External module, connection via RJ45/CAT6 cable
Pressure sensor, differential pressure sensor	Display range 0 ... 99 Pa, 10 m tube (standard)
Inputs/Outputs	Inputs for external sensor, GPS module, external buttons, alarm output
Time Synchronisation	Master-slave connection with GPS or IntuitiveConsole
Power supply	12 VDC/ 4 A via external power adapter (80-264 VAC) 50/60 Hz
Alarm function	Signal output 12V/500mA to operate a relay. Relay switches if positive pressure is too low, and pressure indicator shows LL.
SID 1200 dimensions (W x H x D)	1190 mm x 150 mm x 118 mm plus mounting bracket
Weight	15.0 kg
SID 900 dimensions (W x H x D)	890 mm x 150 mm x 118 mm plus mounting bracket
Weight	11.0 kg
Conformity	RoHS compliant (led-free), 2014/30/EU EMC Directive, 2014/35/EU Low Voltage Directive

The SID is
available in
two sizes:
1200 / 900 cm

The SID
has been
EMC-tested



[integromed-innovation.de](https://www.integromed-innovation.de)

INTEGROMED
Integrated Medical Solutions

INTEGROMED GmbH
Zimmerstr. 1 • 04109 Leipzig/Germany
www.integromed.de

